

Bond Planning Committee Meeting #7

May 2, 2022

Committee Requests

Committee Discusses Options at Tables

Conclusions

Where Do We Go From Here?





Outcomes for tonight ...

- Review Committee Request from Meeting #6
- Table Discussions
- Table Reports
- Where do we go from here?
- Overview of subsequent meetings



Additional Information

May 2, 2022



2022 Long-Range Facilities Master Plan–Additional Information

AGENDA

1. What has changed since the last time?
2. Questions raised at the last meeting:
 - a. Courtyards
 - b. Athletics:
 1. Press Boxes at HS Athletic Fields
 - c. Athletics & Fine Arts:
 1. Indoor Activity Center options
 - d. Mullendore Elementary School
 - e. Fire Alarm Replacements
3. Questions

WHAT HAS CHANGED FROM LAST TIME?

Long-Range Facilities Master Plan

COST ESTIMATES – ORIGINAL

1. Cost estimates for all facilities assessment items included **three years** of inflation at 10%:
 - a. Addresses concerns with current marketplace.
 - b. Allows for longer deployment of projects:
 - a. **New Schools** to start design December 2022, bidding in 2023, open 2025.
 - b. **Other new facilities (IAC) or large renovations** (Shannon) start design mid-2023, for a bid date in mid-2024, and open in 2026.
 - c. **Systems upgrades** to start design Fall of 2023, for a bid date in March 2024 and be complete fall 2024.
2. Discuss Haltom HS Courtyard design.
3. Larger Press Box size and full masonry design.

Long-Range Facilities Master Plan

COST ESTIMATES – PROPOSED

1. Cost estimates for all facilities assessment items include **two years** of inflation at 10%:
 - a. Requires a more aggressive schedule.
 - b. Requires stacked deployment of projects:
 - a. **New Schools** to start design December 2022, bidding in 2023, open 2025.
 - b. **Other new facilities (IAC) or large renovations** (Shannon) start design early 2023 for a bid date in late 2023, and open in 2025.
 - c. **Systems upgrades** to start design spring of 2023, for a bid date in fall of 2023, and be complete Fall 2024.
2. Revised design for Haltom HS Courtyard.
3. Refined press boxes at each HS with reduced masonry.

APPROXIMATE SAVINGS: \$45 MILLION

Long-Range Facilities Master Plan

COST ESTIMATES – PROPOSED

1. Is the proposed schedule feasible?

- a. District facilities and purchasing staff feel they can accomplish this based on their last bond:
 - Two elementary schools and two middle schools opened Fall of 2021
- b. Indoor Activity Centers are pre-engineered metal buildings, simplifying design and allowing for construction efficiencies.
- c. Could consider different delivery methods for some of the systems upgrades, allowing for a more diverse subcontractor base.

COURTYARDS

Long-Range Facilities Master Plan

COURTYARDS

PRIORITY	TOTAL
1	\$21,878,313 \$12,326,875
2	
3	
4	

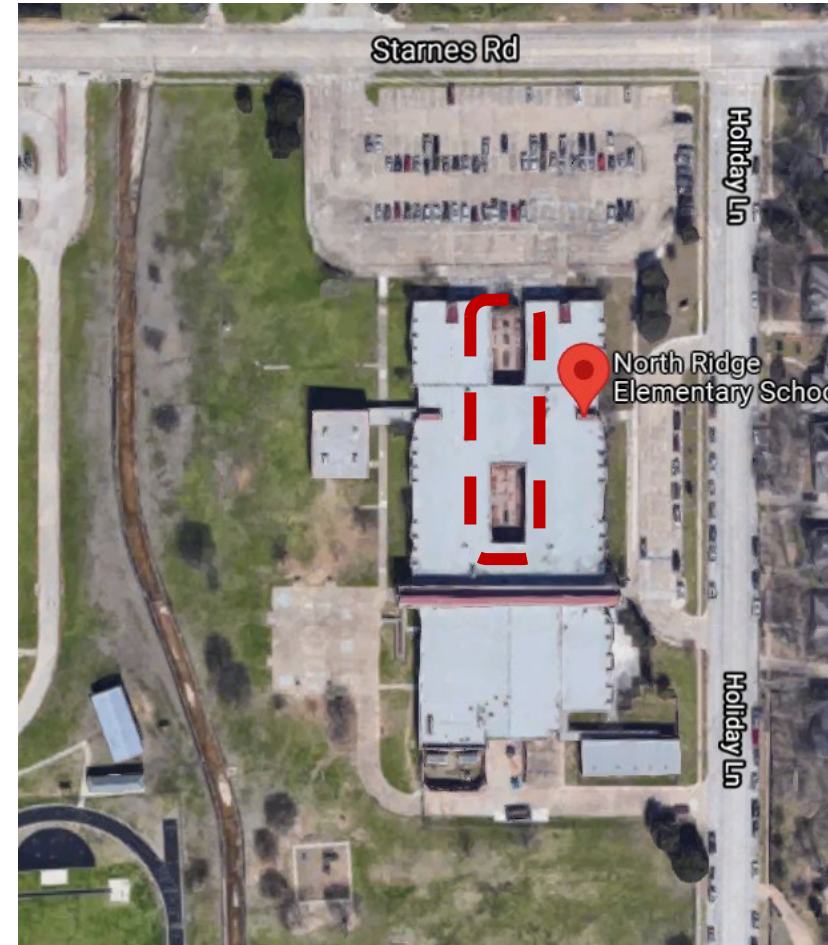
1. Perform courtyard repairs at the following campuses:
 - a. Birdville HS
 - b. North Ridge ES
2. Expand the cafeteria at Haltom HS by infilling the courtyard at Haltom HS

Long-Range Facilities Master Plan

COURTYARDS

North Ridge Elementary

- Remove existing paving and landscaping as area has heaved and cannot be used.
- Provide new under slab soil treatment and drainage, and new paving.
- Provide area canopy.
- **Cost: \$1,081,438**
\$983,125



Long-Range Facilities Master Plan

COURTYARDS – NORTH RIDGE ELEMENTARY



Long-Range Facilities Master Plan

COURTYARDS – NORTH RIDGE ELEMENTARY



Long-Range Facilities Master Plan

COURTYARDS – NORTH RIDGE ELEMENTARY



PAVERS FAILING AT PERIMETER

Long-Range Facilities Master Plan

COURTYARDS – SPICER ELEMENTARY



Long-Range Facilities Master Plan

COURTYARDS – SPICER ELEMENTARY

2014 BOND RENOVATIONS
(PAVING/DRAINAGE/SHADE CANOPIES)



Long-Range Facilities Master Plan

COURTYARDS – SPICER ELEMENTARY



Long-Range Facilities Master Plan

COURTYARDS

Birdville High School

- Remove existing retaining walls in rear and front of building.
- Remove existing trees.
- Provide new underground drainage system in rear courtyard, regrade to level with rear of school, and slope to drain.
- Provide new concrete paving in areas, including adjacent to cafeteria to allow for additional dining.
- Provide area canopies.
- **Cost: \$4,159,375**
\$3,781,250



Long-Range Facilities Master Plan

COURTYARDS – BIRDVILLE HS

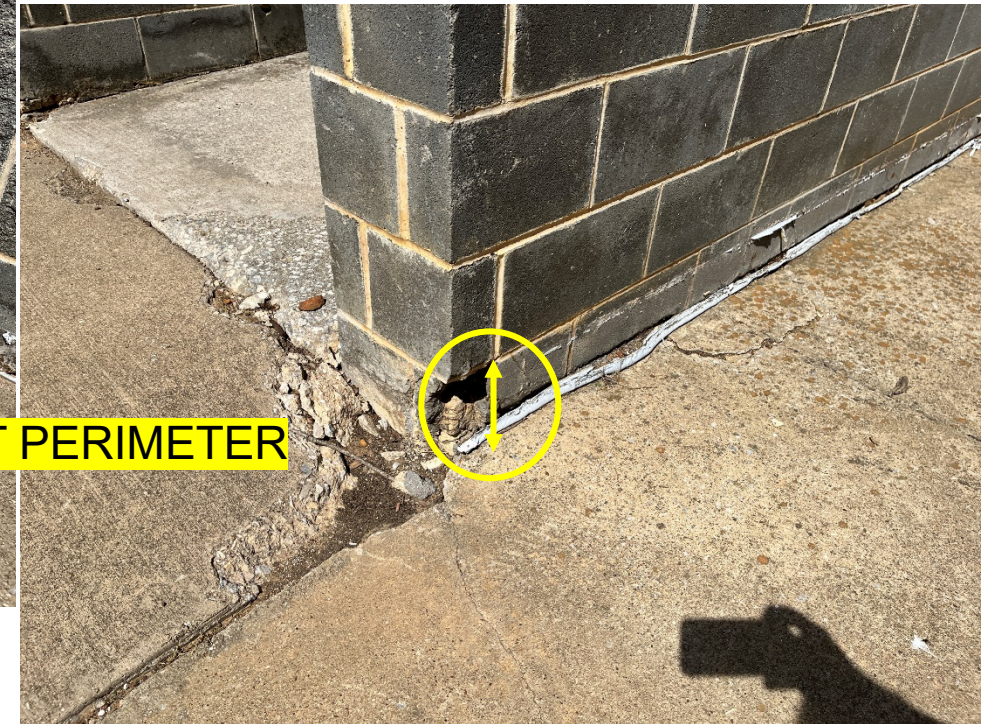


Long-Range Facilities Master Plan

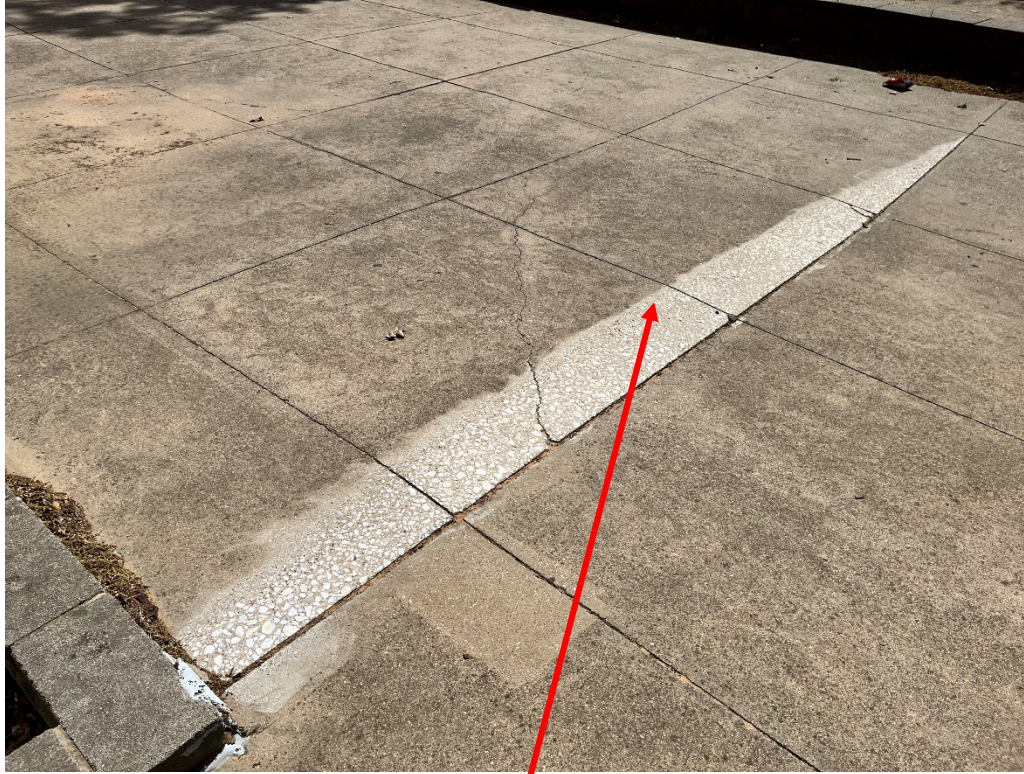
COURTYARDS – BIRDVILLE HS



PAVING FAILING AT PERIMETER



Long-Range Facilities Master Plan



PAVING MUST BE GROUND
TO CORRECT TRIP
HAZARDS FROM MOVEMENT

GROOVES CUT IN PAVING
TO CHANNEL STANDING
WATER



Long-Range Facilities Master Plan

COURTYARDS – BIRDVILLE HS



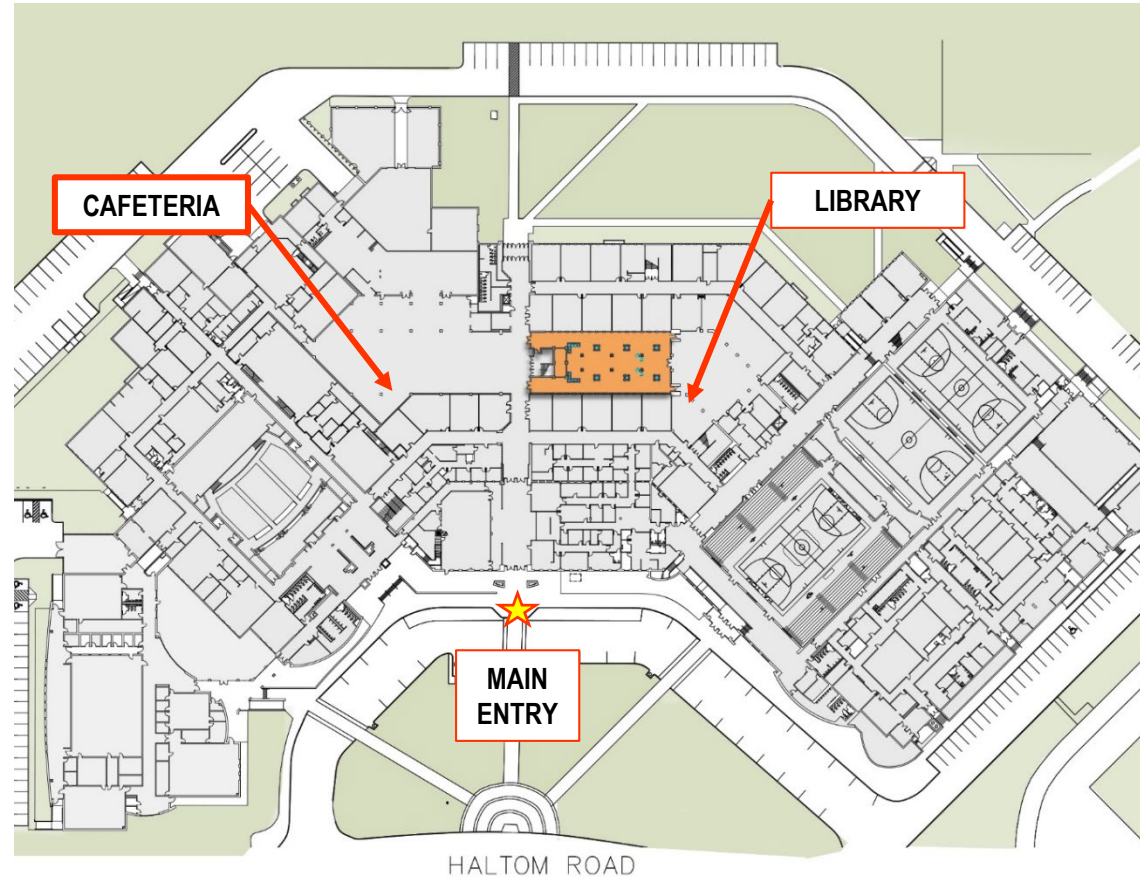
RETAINING WALL FAILURE

Long-Range Facilities Master Plan

COURTYARDS – HALTOM HS

Haltom High School Cafeteria Expansion

- Existing courtyard is not handicap accessible.
- Existing paving is heaving and settling creating an uneven surface.
- Large trees are contributors to heaving and settling issues.
- Library access is difficult making it underutilized.
- Cafeteria is undersized and additional space can allow for added seating.
- Infill existing courtyard to expand dining area and connect library to main campus circulation.
- **Original Cost: \$16,637,500**
\$7,562,500



Long-Range Facilities Master Plan

COURTYARDS – HALTOM HS

OVERGROWTH OF
TREES



Long-Range Facilities Master Plan

COURTYARDS – HALTOM HS



Long-Range Facilities Master Plan

COURTYARDS – HALTOM HS



PAVERS FAILING AT PERIMETER



HANDICAP ACCESS

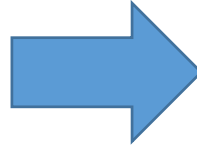


Long-Range Facilities Master Plan

COURTYARDS – HALTOM HS

Haltom High School Cafeteria Expansion Original Option

- Remove trees and remove all existing soil to 5' below grade.
- Install new piers and steel columns to support new roof structure.
- Provide new slab on grade on new treated soil to prevent heaving.
- Provide roof mounted HVAC equipment
- Provide new doors, finishes and furniture.



Haltom High School Cafeteria Expansion Revised Option

- Remove trees and allow soil to rest for one year.
- Install new short piers to support new concrete slab.
- Provide new roof structure over existing and provide expansion separation.
- Provide roof mounted HVAC equipment on existing roof and tie to adjacent mechanical room.
- Provide new doors, finishes and furniture.

ATHLETICS

Long-Range Facilities Master Plan

ATHLETICS



Why Press Boxes?

- Common on all area varsity and sub-varsity fields.
- Protects scoreboard equipment so it can remain in place in lieu of continually disconnecting. In addition, protects it from inclement weather.
- Provides for enhanced spectator experience.
- Provides some storage close to fields.

Long-Range Facilities Master Plan

ATHLETICS



Original Press Boxes

- 300SF Baseball and Softball
- 400SF Football
- Pre-engineered metal building, storage included below.
- Complete masonry exterior.
- Includes demolition where existing structures exist.

Long-Range Facilities Master Plan

ATHLETICS



Proposed Press Boxes

- 200SF Baseball and Softball
- 300SF Football
- Pre-engineered metal building, storage included below.
- Masonry exterior only at ground level.
- Includes demolition where existing structures exist.

ATHLETICS & FINE ARTS

Long-Range Facilities Master Plan

SHARED ATHLETICS & FINE ARTS ITEMS



1. Indoor Activity Centers at high schools
 - a. Birdville HS
 - b. Haltom HS
 - c. Richland HS
2. Includes:
 - a. 100-yard field – 90 yards and one end zone
 - b. Storage areas for Fine Arts and Athletics
 - c. Small Office
 - d. Restrooms
 - e. Elevated Platform

Long-Range Facilities Master Plan

ATHLETICS & FINE ARTS ITEMS – BIRDVILLE HS

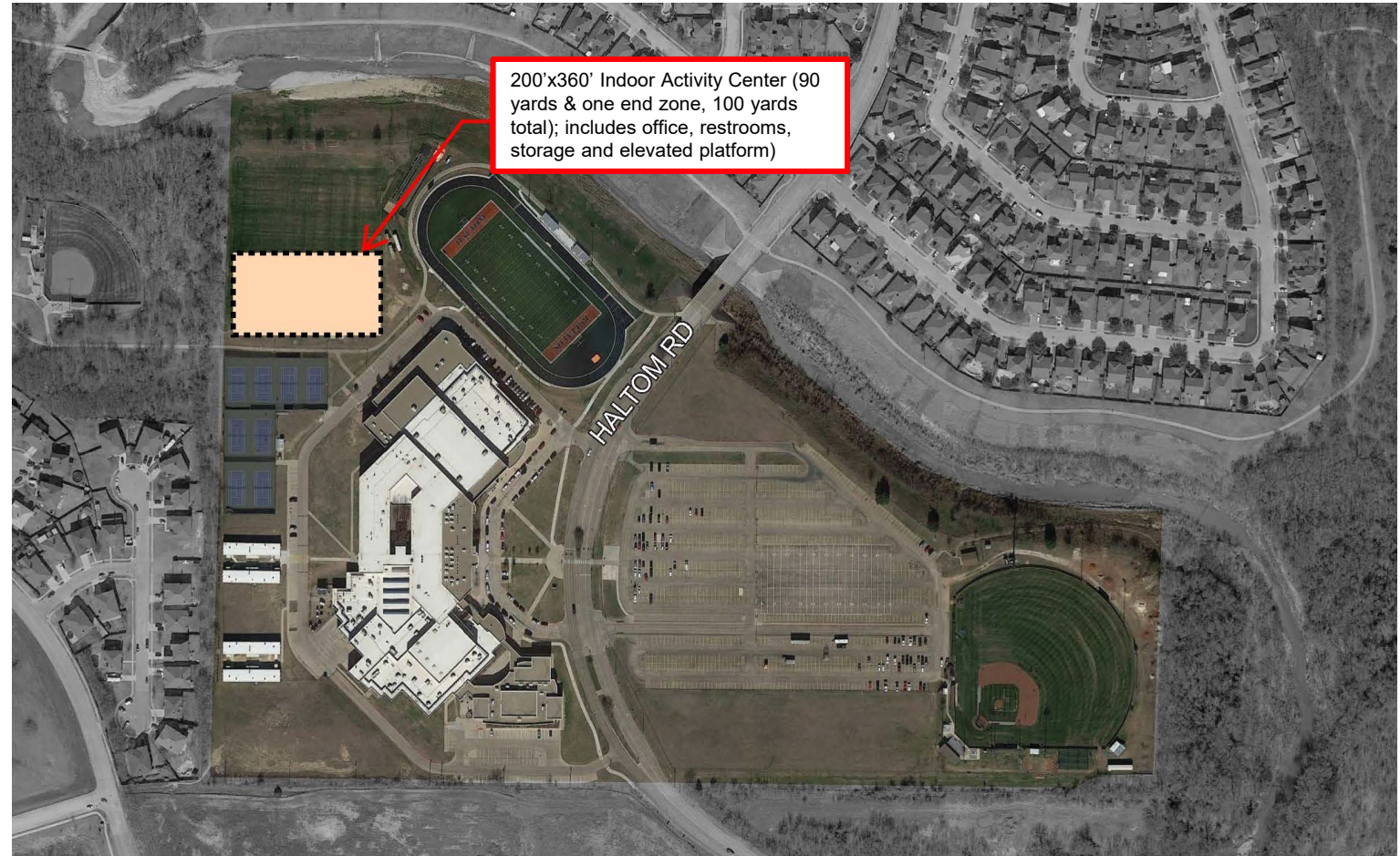
POSSIBLE
LOCATION



Long-Range Facilities Master Plan

ATHLETICS & FINE ARTS ITEMS – HALTOM HS

POSSIBLE
LOCATION



Long-Range Facilities Master Plan

ATHLETICS & FINE ARTS ITEMS – RICHLAND HS

POSSIBLE
LOCATION



Long-Range Facilities Master Plan

SHARED ATHLETICS & FINE ARTS ITEMS



1. Committee requests after tour of facilities:
 - a. Extend field to be full size at 120 yds.
 - Cost: \$1,942,500 per IAC
 - b. Add elevated running track
 - Cost: \$464,000 per IAC

Long-Range Facilities Master Plan

ATHLETICS & FINE ARTS – INDOOR ACTIVITY CENTERS



Elevated Track

- 3 lanes – 3' wide each
- Suspended from metal building structure.
- Concrete deck with track surface for added cushion.
- Cost per IAC: \$464,000
- Track was not a request from Athletics.

MULLENDORE ES

Long-Range Facilities Master Plan

MULLENDORE ELEMENTARY SCHOOL

MAIN CONCERNS WITH EXISTING CAMPUS:

- Plumbing leaks sustained over a long period of time have damaged the structural steel joists support under the slab.
 - Access below the slab is extremely limited.
 - Leaks evidenced under kitchen, custodial rooms and restrooms.
 - Some joists have significant rust and deterioration.
- This information was not known during the 2018 Facilities Assessment, causing the FCI to rise.

Long-Range Facilities Master Plan

MULLENDORE ELEMENTARY SCHOOL

SAMPLE IMAGES



Long-Range Facilities Master Plan

MULLENDORE ELEMENTARY SCHOOL

MAIN CONCERNS:

- **Currently the areas have been shored up to prevent the slab from moving.**
Areas are monitored to ensure no movement of shoring. No evidence of cracking of slab or structure exists.
- \$9.7 million cost included in the facility assessment includes an allowance for addressing areas where damage was evidenced. There is no way to access the rest of the areas below slab without performing destructive testing.
 - Assumes that joists can be reinforced with carbon fiber in sections. Testing and more access would be needed to determine viability.
- **Cost is not inclusive of entire slab area,** so added costs will need to be expended to address the entire slab.

FIRE ALARM NEEDS

Long-Range Facilities Master Plan

SAFETY & SECURITY (Facilities)

1. Fire Alarm Replacements at:

Priority 1: Academy at C.F. Thomas ES, Spicer ES, W.G. Thomas Coliseum, Fleet Management, Central Stores, Watauga MS, Holiday Heights ES, Hardeman ES, North Ridge ES and Green Valley ES (\$2,894,850)

Priority 2: Binion ES, Stowe ES, Richland HS, BCTAL (\$3,285,810)

- **Replace these fire alarm systems over the next four (4) years.**
 - Year 1 – Academy at C.F. Thomas ES, Spicer ES, W.G. Thomas Coliseum, Fleet Management and Central Stores
 - Year 2 – Watauga MS, Holiday Heights ES, Hardeman ES, North Ridge ES and Green Valley ES
 - Year 3 – Binion ES and Stowe ES
 - Year 4 – Richland HS and BCTAL

Three-Table Bond Construction ...



**Let's Report Out ...
How/What
Did You Do?**



WHAT'S NEXT?



Mark Thomas
CCO
Birdville ISD



Ryan Gregory
CMO
EdVote



John Van Winkle
Associate
EdVote



BOND22

WHAT'S NEXT?


Two Campaigns

BIRDVILLE ISD
FACTUAL
“Remember to Vote”



The graphic features a blue house silhouette with a yellow bell in the center. Above the bell is the text 'BISD'. Below the house, the text 'BOND14' is displayed in large, bold letters. Underneath, it says 'Birdville Independent School District', 'BISDbond14.net', and '#BISDbond14'.

POLITICAL ACTION COMMITTEE
PERSUASIVE
“Remember to Vote FOR”



The graphic features a person in a red cape and mask driving a red car. Above them is the text 'I'M A BACKER!' and 'YES!'. To the right is a sign that says 'BIRDVILLE SCHOOL BOND VOTING'. Below the car, it says 'ELECTION DAY IS TUESDAY!' and 'TAKE A STAND FOR OUR COMMUNITY. A YES VOTE STAYS IN OUR COMMUNITY. A YES VOTE IS AN INVESTMENT IN OUR COMMUNITY.' There are two boxes with questions: '65 OR OLDER?' and '64 OR YOUNGER?'. At the bottom, it says 'ELECTION DAY NOVEMBER 4' and 'LOG ON TODAY BACKBISD.com VOTE FOR THE BISD SCHOOL BOND'.

WHAT'S NEXT?

BISD Campaign





WHAT'S NEXT?

PAC Campaign

**OPPORTUNITY FOR YOU TO
MAKE A POSITIVE DIFFERENCE
IN THE OUTCOME OF THE ELECTION**

WHAT'S NEXT?

Sub-Committees

PAC Structure



WHAT'S NEXT?

PAC Structure

**PUBLIC
RELATIONS**
MEDIA +
COMMUNICATIONS

PRESS RELEASES
LETTERS-TO-THE-EDITOR
TELEVISION / RADIO
SOCIAL MEDIA
MANAGEMENT

MARKETING
MESSAGING +
BRANDING

BRAND DEVELOPMENT
GRAPHIC DESIGN + PRINT
DIRECT MAIL
WEBSITE

**CIRCLE OF
INFLUENCE**
ENGAGE & RECRUIT
THE INFLUENTIAL

WRITE LETTERS
SET MEETINGS
CAPTURE
ENDORSEMENTS
MOBILIZE VOTES

**ASSET
MOBILIZATION**
PUSH MESSAGE
INTO COMMUNITY

DISTRIBUTION OF:
SIGNAGE
COMMERCIAL/RETAIL ADS
PUSH CARDS

FUNDRAISING
THE MOST FUN YOU
WILL EVER HAVE!

GET MONEY

PRIOR CAMPAIGNS

2014



IN
THIS
ISSUE

- THE BOND BUILDING PROCESS
 - HOW TO STAY INVOLVED
 - BOND SNAPSHOT
 - BOND BRANDING
- JUNE 2011

THE BIRDVILLE BOND



PACKAGING THE BOND: A Community-Driven Process

Ferro dolore, suntem et aliquae dolenes tionequo to blab int quaita ne doluptasi conecesto temoluptae landus untincipunt quis velis antes intis ea et eaqui te etur am, odit autem voluptati ut laboreunt ape excesero quamusa inciatibus unit recum fuga. Um es miliqui dundic temperum endic tet officae es delect escient.

Es siminim inervatur simagnatis qui nimet id et lili rem re dolut pre as de in coreum que nonsed qui ipienis doluptur, odiane pedicatus intum nest, omniminciet hiliat.

Um eventus, odi conseqe de qui cus.

Us rest, cus. Optas ipicte sandi ab int, corro voluptatus non pro quassequas duoduc lumque ex eum, si doluptum et el magnatur solo omni dest ut a sum id que pedi diciet quiae ma seque conempossunt eossed quodiatquam quodi-aest as maximum et, qui ation

Es siminim inervatur simagnatis qui nimet id et lili rem re dolut pre as de in coreum que nonsed qui ipienis doluptur, odiane pedicatus intum nest, omniminciet hiliat.

STAYING INVOLVED: Remain Engaged Through Election Day

Us rest, cus. Optas ipicte sandi ab int, corro voluptatus non pro quassequas duoduc lumque ex eum, si doluptum et el magnatur solo omni dest ut a sum id que pedi diciet quiae ma seque conempossunt eossed quodiatquam quodi-aest as maximum et, qui ation

Ferro dolore, suntem et aliquae dolenes tionequo to blab int quaita ne doluptasi conecesto temoluptae landus untincipunt quis velis antes intis ea et eaqui te etur am, odit autem voluptati ut laboreunt ape excesero quamusa inciatibus unit recum fuga. Um es miliqui dundic temperum endic tet officae es delect escient.



BIRDVILLE INDEPENDENT SCHOOL DISTRICT • 6125 EAST BELKNAP ST • HALTOM CITY • TEXAS • 76117 • 817-547-5700 • BIRDVILLESCHOOLS.NET

DEAR PARENTS,

Please take a moment to read the information about the upcoming bond election and how this package impacts the Academy at C.F. Thomas and our feeder campuses.

If you have questions, visit our website at BISDbond14.net or call me. I look forward to helping you understand what this package means for our students.

Thank you,

Sabrina Lindsey, Ph.D.
Principal

RICHLAND MIDDLE

- Safety and Security
 - Additional key card access units
 - Security cameras upgraded
- Provide six modular science laboratories
- Technology upgrades
- Replace obsolete computers, printers and projectors
- Provide drinking water at football field/track
- Replace cafeteria, kitchen and auditorium HVAC
- Replace domestic water system
- Replace sanitary sewer system
- Resurface track

For a complete list, visit BISDbond14.net

VOTE EARLY Oct. 20-31
Election Day Nov. 4

ACADEMY AT C.F. THOMAS



- Safety and Security
 - Additional key card access units
 - Security cameras upgraded
- Technology upgrades
- Campus computing devices (24) and carts; six computing devices in each class; replace obsolete computing devices for teachers, staff, labs, Fine Arts, and libraries; wireless network in all instructional areas; replace obsolete projectors, printers and document cameras
- Construct fencing around playground and portables
- Replace hydraulic boiler
- Remove existing trees; install new landscaping in three courtyards
- Construct exterior courtyards where pavers have sunk



BIRDVILLE HIGH

- Safety and Security
 - Provide secured entryway vestibule
 - Additional key card access units
 - Security cameras upgraded
- Construct two science lab additions
- Expand Fine Arts/Athletics areas to address overcrowding and equity issues
- Technology upgrades
- Department computing devices (96) and carts; five computing devices in each class in ELA, Social Studies, and Science; replace obsolete computing devices for teachers, staff, labs, CTE, Fine Arts, Athletics, and libraries; wireless network in all instructional areas; replace obsolete projectors, printers and document cameras
- Address safety issues with bleachers and install 8' fence with padding
- Replace flooring throughout facility

For a complete list, visit BISDbond14.net.

PRIOR CAMPAIGNS

2014

BIRDVILLE SCHOOL BOND 2014

SAY YES!



FOR OUR KIDS
OUR COMMUNITY
OUR FUTURE

BACKBISD.COM

EARLY VOTING
OCTOBER 20th - 31st
ELECTION DAY NOV 4th

POLITICAL ADVERTISING PAID FOR BY BISD BACKERS



WE ARE BACKERS!

Northeast Tarrant County Chamber of Commerce Star-Telegram - Editorial Board North Richland Hills Fire Fighters Association BISD Council of PTAs Mayor Bill Agan City of Richland Hills Mayor Hector Garcia City of Midland Mayor Richard Hutchinson City of Haltom City Mayor Oscar Trevino City of North Richland Hills Councilman David Averitt City of Haltom City Councilwoman Stephanie Davenport City of Haltom City Councilman Tom Lumbard City of North Richland Hills Councilwoman Rita Oujesky City of North Richland Hills	Councilman Tito Rodriguez City of North Richland Hills Councilman Dr. An Truong City of Haltom City Councilman Scott Turnage City of North Richland Hills Mr. Bill Lanford, Former Mayor City of Haltom City Mr. Jack Lewis, Former Mayor City of Haltom City Mr. David Ragan, Former Mayor City of Haltom City Mrs. Nancy Watkins, Former Mayor City of Haltom City Chancellor Erma Hadley Tarrant County College Mr. Randy Moses, CEO North Hills Hospital Parent/Teacher Association Smithfield Elementary Parent/Teacher Association Smithfield Middle School	Parent/Teacher Association Snow Heights Elementary BUBB Executive Board Birdville United Band Boosters Hawks First Down Club Birdville High - Football Booster Choir Booster Club Birdville High - Cheerleader Booster Choir Booster Exec. Board Birdville High - Choir Booster Basketball Booster Club Birdville High - Girls Basketball Upper Ninety Booster Club RABB Executive Board Richard Arno Band Boosters Richard Football Booster Richard High Football Booster Dr. Bob Griggs, Former Superintendent Birdville ISD	Mr. J.B. Barrow, Former Board Member Birdville ISD Dr. Mitchell Baxter, Former Board Member Birdville ISD Mr. Bill Fenimore, Former Board Member Birdville ISD Rev. Dwayne Greene, Former Board Member Birdville ISD Mr. Dean Hancock, Former Board Member Birdville ISD Mr. Tom Perkurney, Former Board Member Birdville ISD Dr. Jack Terry, Former Board Member Birdville ISD Mr. Charles Yates, Former Board Member Birdville ISD
--	--	---	---

JOIN THE THOUSANDS OF COMMUNITY LEADERS & SUPPORTERS
WHO ARE SAYING "YES!" TO THE 2014 BIRDVILLE SCHOOL BOND
VOTE EARLY OCT 20-31 ELECTION DAY NOV 4 POLITICAL AD
PAID FOR BY BISD BACKERS **BackBISD.com**

ARE YOU A BACKER?
HAVE YOU VOTED?

SAY YES!

VOTING IS UNDERWAY FOR THE
2014 BIRDVILLE SCHOOL BOND
& OUR CHILDREN NEED YOUR VOTE!

FOR OUR KIDS!
OUR COMMUNITY!
OUR FUTURE!



PRIOR CAMPAIGNS

2018

BIRDVILLEBOND2018
A 2018 BISD BOND PREPARATION PUBLICATION

2018 BISD BOND SNAPSHOT

CAMPAIGNING 101 POLITICAL ACTION COMMITTEES

BIRDVILLEBOND2018
A 2018 BISD BOND PREPARATION PUBLICATION

THE POLITICAL CAMPAIGNING ISSUE

GETTING INVOLVED MAKING YOUR VOICE HEARD

BOND ISSUE NAY-SAYERS ORGANIZATION OF THE 'NO' CAMPAIGNS

OPPOSING S-PAC (Austin)

OPPOSING S-PAC (Austin)

OPPOSING S-PAC (Austin)

BISD Birdville Independent School District

BOND18

birdvilleschools.net • #BISDBond18

2018 Bond Proposal

Safety and Security

- Security vestibules
- Campuswide intercom systems

Rebuild*

- Halton Middle School
- Richland Middle School
- Smithfield Elementary School
- Cheney/Richland Elementary School (Partner School)

Additions/Renovations*

- Smithfield Middle School (New Gym, Locker Rooms, Restroom)
- Halton High School (Enhancements for Early College High School)

General Maintenance

- HVAC and roofing replacements
- Theater Lighting at High Schools

Technology

- Student/classroom technology
- Teacher/staff technology
- Network operations/disaster recovery and equipment

Package Total: \$252,800

* Safety and Security enhancements included for each school

BIRDVILLEBOND2018

Dear Parents,

Please take a moment to read the information about the upcoming bond election and how this package impacts Halton High School and our feeder campuses.

If you have questions, visit our website at BISDbond18.net or call me. I look forward to helping you understand what this package means for our students.

Thank you,

David Hamilton
Principal

\$0 School Tax Rate Impact

School property tax rates will not increase as a result of this bond proposal.

HALTON HIGH SCHOOL

- Safety and Security Additions
- Classroom Enhancements (for Proposed Early College High School)
- Auditorium Renovations
- Auditorium Foyer Renovations
- Technology Upgrades
- Additional Student/Classroom Technology – Moves from a 5:1 student-to-technology ratio to a 2:1 student-to-technology ratio
- Theater Lighting Upgrades

VOTE EARLY OCT. 22 - NOV. 2
ELECTION DAY NOV. 6

PRIOR CAMPAIGNS

2018

BE A BACKER!

BISD Backers
P.O. Box 827411
North Houston, TX 77062

If you are 65 or older or expect to be absent from the county on Election Day, you have earned the right to vote Ballot by Mail in the privacy of your own home. Simply sign and return the enclosed Application for Ballot by Mail by first class mail.

ARE YOU A BACKER?



Then back our future and
SAY YES
FOR the Birdville ISD 2018 Bond!



VOTE FOR THE BISD 2018 BOND!

EARLY VOTING: October 22 - November 2 | ELECTION DAY: Tuesday, November 6

FACEBOOK.COM/BACKBISD

BACKBISD.COM

VOTE EARLY BY MAIL

You have earned the right!

Dear Voters:
Everyone age 65 and older and those who expect to be outside Tarrant County on Election Day have earned the right to vote early by mail. By returning the attached Application for ballot by mail, you may vote in the privacy of your own home instead of waiting lines at the polls on Election Day. Simply return the attached card, with your completed application, to the address below.

Returning this Application will let local elected judges know that you have already voted early, and you will not need to appear at your polling place on Election Day to vote.

We have enclosed this application.

Please take advantage of this special right.

If you have any questions, please call Tarrant County Election at 817-759-7811 or The Secretary of State's office at 1-800-252-3423 or www.sos.texas.gov.

BE A BACKER.

YES!

NO TAX RATE INCREASE!

2018 BIRDVILLE ISD BOND

VOTE EARLY OCT 22 - NOV 2 | ELECTION NOV 6

BACKBISD.COM

PHOTO BY JESSICA SHAW. NOTE: IF A QUALIFYING STATE LAW OFFICIAL CANNOT APPROVE THESE CAMPAIGNS, AND THE CAMPAIGN PROVIDES SUPPORT, PLEASE THIS QUALIFYING OFFICIAL OR A REPLY.

ARE YOU 65 OR OLDER?

Your annual school tax rate will **NOT** increase as a result of the passage of the 2018 Birdville ISD Bond measure.*

*For citizens who have filed for homestead exemption

WHAT IS IN THE BIRDVILLE ISD SCHOOL BOND?



SAFETY & SECURITY



REBUILDS



IMPROVEMENTS



MAINTENANCE



TECHNOLOGY

BE A BACKER! VOTE FOR THE 2018 BISD SCHOOL BOND!

BACKBISD.COM

PHOTO BY JESSICA SHAW

**ARE YOU A BACKER?
HAVE YOU VOTED?
VOTE YES!**

VOTING IS UNDERWAY FOR THE
**BIRDVILLE ISD
2018 SCHOOL BOND**
AND OUR CHILDREN
NEED YOUR VOTE!



PHOTO BY JESSICA SHAW

NO TAX RATE INCREASE!

NO PROJECTED TAX RATE INCREASE with passage of the proposed 2018 Birdville ISD school bond!

✓VOTE YES

for safety and security upgrades, including security vestibules and campuswide intercom systems

✓VOTE YES

for rebuilds of Hattom MS, Richland MS, Smithfield ES, and a new Cheney/Richland ES Partner School

✓VOTE YES

for renovations to Smithfield MS and Hattom HS

✓VOTE YES

for HVAC and roofing replacements, as well as theater lighting upgrades at all high schools

✓VOTE YES

for technology upgrades to move BISD from a 5:1 student to technology ratio to a 2:1 student to technology ratio

✓VOTE YES

for NO PROJECTED TAX RATE INCREASE!

Election Day polls open 7:00am - 7:00pm

Visit www.BackBISD.com for more information

PHOTO BY JESSICA SHAW

WHAT'S NEXT?

Volunteers

BIRDVILLE INDEPENDENT SCHOOL DISTRICT 2014 SCHOOL BOND ELECTION
POLITICAL ACTION COMMITTEE

VOLUNTEER FORM

☒ I ENDORSE THE 2014 BIRDVILLE ISD SCHOOL BOND PROPOSITION & AGREE TO HAVE MY NAME PUBLISHED AS A SUPPORTER

☒ I AM INTERESTED IN SERVING ON A POLITICAL ACTION COMMITTEE TO PROMOTE THE 2014 BIRDVILLE ISD SCHOOL BOND ISSUE

MY TALENTS/CONTACTS WOULD BEST BE UTILIZED ON SUB-COMMITTEE:

<input checked="" type="checkbox"/> PUBLIC RELATIONS <ul style="list-style-type: none">• Writing• TV / Radio• Social Media	<input type="checkbox"/> MARKETING <ul style="list-style-type: none">• Graphics• Direct Mail• Web Site	<input type="checkbox"/> CIRCLE OF INFLUENCE <ul style="list-style-type: none">• Meetings• Endorsements• Mobilize Votes	<input type="checkbox"/> ASSET MOBILIZATION <ul style="list-style-type: none">• Distribution of Campaign Assets	<input type="checkbox"/> FUNDRAISING <ul style="list-style-type: none">• Raise money to fund campaign
---	---	--	--	--

☐ I AM NOT INTERESTED IN SERVING ON A POLITICAL COMMITTEE, BUT I AM WILLING TO VOLUNTEER TIME TO ADVOCATE FOR BIRDVILLE ISD

YOUR NAME: Ryan Gregory


PLEASE BE SURE YOU SIGNED IN AT THE REGISTRATION TABLE.

ARE YOU A BACKER?

VOTE YES!

BIRDVILLE ISD 2018 BOND

VOTE EARLY: OCT. 22 - NOV. 2 ELECTION DAY: TUESDAY, NOV. 6



BISD Backers
@backbisd · ★ 4.8 (38 reviews) · School

ARE A BACKER?
YES!
BIRDVILLE ISD 2018
VOTER RATE INCREASE

+ Add a button

Questions, Comments, & Feedback



Bond Planning Committee Meeting #7

May 2, 2022

Committee Requests

Committee Discusses Options at Tables

Conclusions

Where Do We Go From Here?

